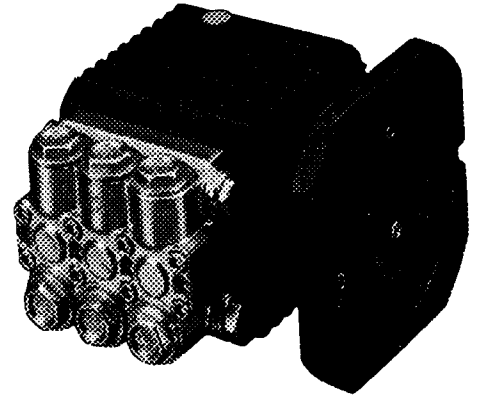


**FEATURES**

- Forged brass manifold with exclusive lifetime warranty
- Die cast, anodized aluminum, oil-bath crankcase
- Solid ceramic plungers with continuously lubricated packings
- The original Interpump unitized, stainless steel, K01 inlet and outlet valves
- Ideal for all general cleaning , RO, and misting applications
- Comes standard with NEMA 56C electric motor mounting flange
- Also available in "L" left-handed versions

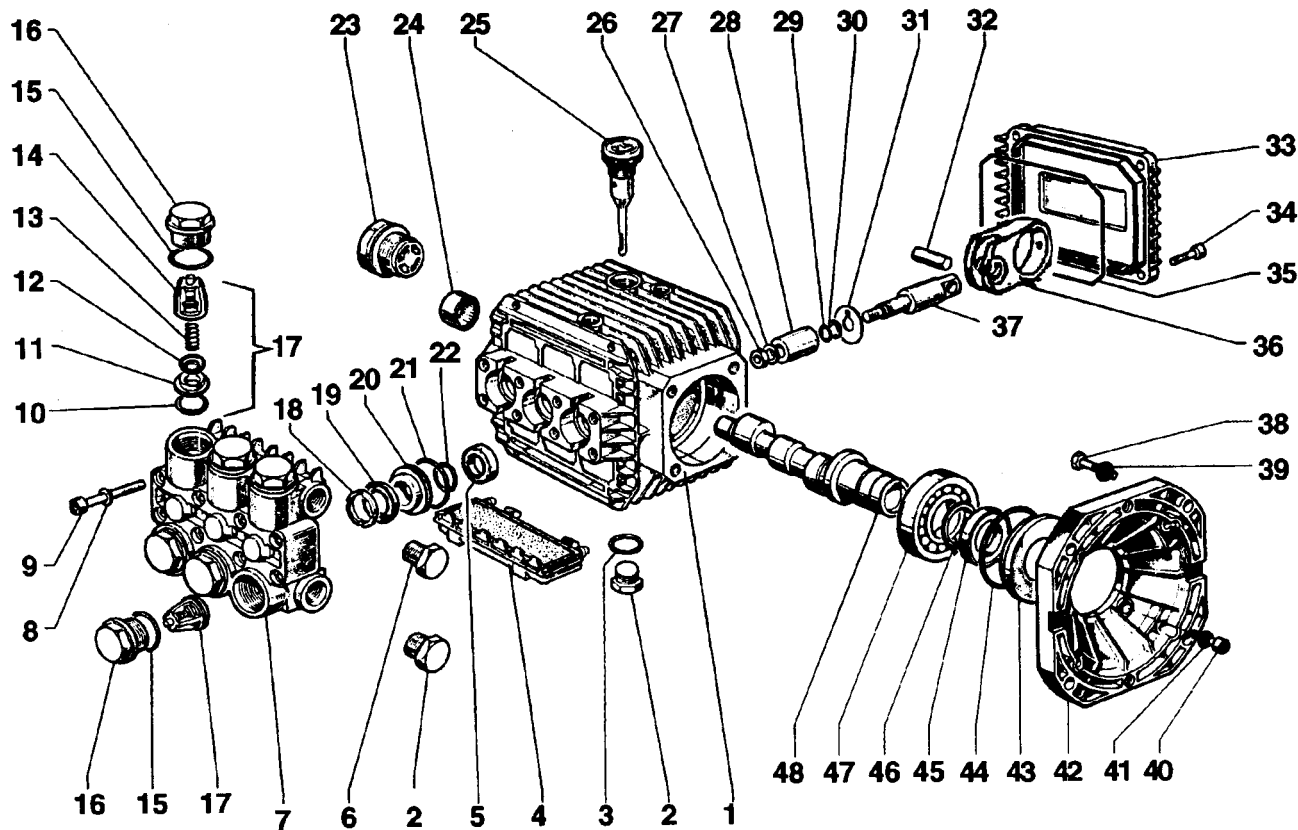
**SPECIFICATIONS**

Pump Model	TP2021C17	TP2024C17	TP2032C17
Maximum Volume	2.1 GPM	2.4 GPM	3.2 GPM
Maximum Discharge Pressure	2500 PSI	2000 PSI	
Maximum Pump Speed	1750 RPM		
Maximum Inlet Pressure	125 PSI		
Maximum Inlet Vacuum	3 ft. water (2.6 in. Hg)		
Bore	.591 in. / 15 mm	.709 in. / 18 mm	
Stroke	.370 in. / 9.4 mm	2.83 in. / 7.2 mm	.370 in. / 9.4 mm
Crankcase Oil Capacity	11.2 oz.		
Maximum Fluid Temperature	165°F		
Inlet Port Thread	3/8-19 BSPP-F		
Discharge Port Thread	1/4-19 BSPP-F		
Shaft Diameter	5/8 in. / 16 mm		
Weight	11.5 lbs.		
Dimensions	7.0 x 7.2 x 5.5 in.		

# TP Series 51 - C17

## GENERAL PUMP

A member of the Interpump Group



### PARTS LIST

ITEM	PART NO.	DESCRIPTION	KIT	QTY.	ITEM	PART NO.	DESCRIPTION	KIT	QTY.	ITEM	PART NO.	DESCRIPTION	KIT	QTY.
1.	51.0106.22	Crankcase		1	18.	51.1000.51	Head Ring	96,97	3	31.	96.7070.00	Washer, Flinger		3
2.	98.2100.00	Plug, 3/8-BSP		2		51.1001.51	Head Ring	140,141		32.	97.7310.00	Connecting Rod Pin		3
3.	90.3833.00	O-Ring, .549 x .103		1	19.	90.2620.00	Packing	96,97	3	33.	51.1600.22	Crankcase Cover		1
4.	51.2091.02	Protector		1		90.2681.00	18mm	140,141		34.	99.1867.00	Screw, M6 x 18		4
5.	90.1565.00	Oil Seal	83	3	20.	51.0800.70	Packing Retainer	86,96	3	35.	90.3917.00	Gasket		1
6.	98.2041.00	Plug		1		51.0803.70	18mm	139,140		36.	51.0301.22	Connecting Rod End		3
7.	51.1200.23	Manifold, Aluminum		1	21.	90.3604.00	O-Ring, .989 x .070	86,96,97	3	37.	51.0500.56	Piston Guide		3
	51.1200.41	Manifold, Brass					18mm	139,140,141		38.	99.3345.00	Screw, 3/8-BSP		4
	51.1204.41	Manifold, Brass (TP2032)			22.	90.3835.00	O-Ring, .594 x .103	86,96,97	3	39.	96.7104.00	Washer, M10, Schnorr		4
8.	96.6938.00	Washer, M6.4, Schnorr		12		90.3843.00	18mm	139,140,141		40.	99.1867.00	Screw, M6 x 18		4
9.	99.1943.00	Screw, M6 x 40		12	23.	97.5968.00	Sight Gauge		1	41.	96.6938.00	Washer, M6.4, Schnorr		4
10.	90.3841.00	O-Ring, .674 x .103		6	24.	91.8015.00	Needle Bearing		1	42.	10.0344.22	Flange		1
11.	36.2003.66	Valve Seat		6	25.	98.2103.00	Oil Dip Stick		1	43.	50.2115.51	Spacer		1
12.	36.2001.76	Valve Plate		6	26.	92.2216.00	Nut, M8		3	44.	90.4097.00	O-Ring, 2.187 x .139		1
13.	94.7376.00	Spring		6	27.	96.7008.00	Washer, M8		3	45.	90.1644.00	Oil Seal		1
14.	36.2002.51	Valve Cage		6	28.	51.0400.09	Plunger		3	46.	90.0667.00	Snap Ring		1
15.	90.3847.00	O-Ring, .797 x .103		6		51.0401.66	18 mm			47.	20.2835.21	Bearing		1
16.	98.2216.00	Valve Cap		6	29.	90.3572.00	O-Ring, .208 x .070		3	48.	51.0215.65	Crankshaft		1
17.	36.7115.01	Valve Assembly		6	30.	90.5022.00	Back-up Ring		3		51.0225.65	Crankshaft (TP2024)		

### REPAIR KITS

KIT NO.	83	86 (15mm)	96 (15mm)	97 (15mm)	123	139 (18mm)	140 (18mm)	141 (18mm)
ITEM NO.s INCLUDED IN KIT	5	20, 21, 22	18, 19, 20, 21, 22	18, 19, 21, 22	6, 7, 8, 10, 11, 12 (17)	20, 21, 22	18, 19, 20, 21, 22	18, 19, 21, 22
NUMBER OF ASSEMBLIES IN KIT	3	3	1	3	6	3	1	3
NUMBER OF CYLINDERS KIT WILL SERVICE	3	3	1	3	3	3	1	3

### TORQUE SPECS\*

Position	Ft.-lbs.
2	29.4
6	14.7
9	8.8
16	33.1
23	13.2
26	11.0
34	7.3
38	22.1
40	7.3
49	14.7
52	7.3